

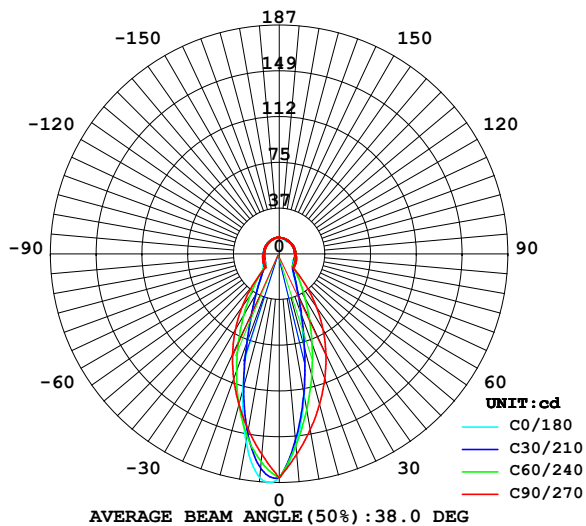
## LUMINAIRE PHOTOMETRIC TEST REPORT

Report number:

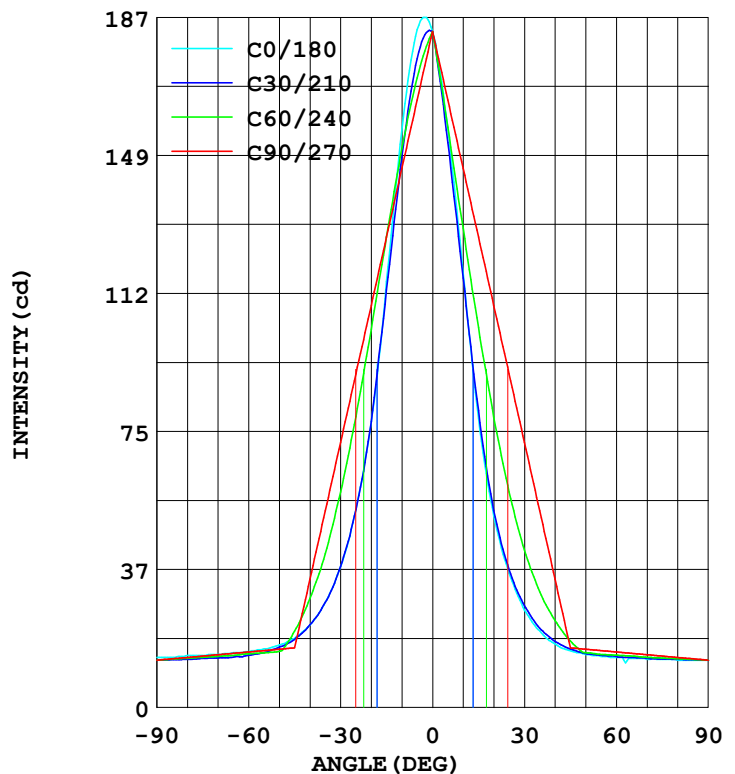
MANUFACTURER:	Address:	
NAME: 550107	TYPE:	WEIGHT:
SPECIFICATION:	DIMENSION:	SERIAL No.:

DATA OF LAMP		Imax(cd)	186.6	S/MH(C0/180)	0.59
MODEL		EFFICIENCY(%)	100.0	S/MH(C90/270)	0.72
NOMINAL POWER(W)	2	TOTAL FLUX(lm)	244.37	Voltage(V)	220.5
RATED VOLTAGE(V)	220	EFFICIENCY(lm/W)	116.4	Current(A)	0.019
NOMINAL FLUX(lm)	244.4	$\eta$ up(%)	33.2	Power(W)	2.100
LAMPS QUANTITY	1	$\eta$ down(%)	66.8	Power Factor(PF)	0.492
TEST VOLTAGE(V)	220.5	Effective Flux(lm)	98.9	EEL	0.154

LUMINOUS INTENSITY DISTRIBUTION



LUMINOUS INTENSITY DISTRIBUTION



Test System:HOPOO HPG1900  
Temperature:25.3DEG  
Operators:  
Test Date:2023年03月08日

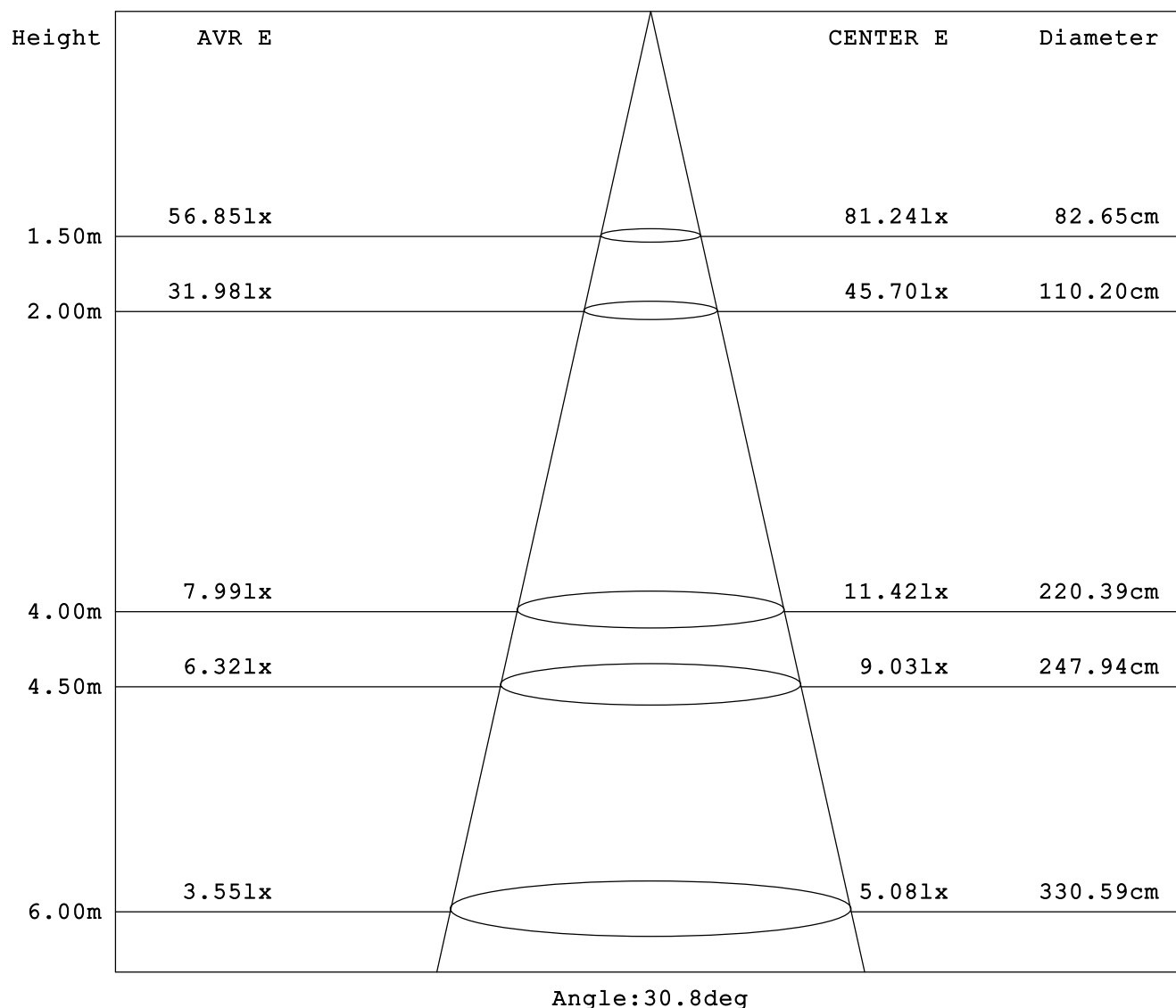
Test Set: 5.0deg/s B-Beta (TYPE B)  
Humidity:65.0%  
Test Distance:16.000 m  
Remarks:

# HONGPU GONIOPHOTOMETERS SYSTEM TEST REPORT

## AVERAGE AND CENTER E Figure

Report number:

MANUFACTURER:	Address:	
NAME: LCG1210-2	TYPE:	WEIGHT:
SPECIFICATION:	DIMENSION:	SERIAL No.:



Test System: HOPOO HPG1900  
 Temperature: 25.3DEG  
 Operators:  
 Test Date: 2023年03月08日

Test Set: 5.0deg/s B-Beta (TYPE B)  
 Humidity: 65.0%  
 Test Distance: 16.000 m  
 Remarks:

# HONGPU GONIOPHOTOMETERS SYSTEM TEST REPORT

## ZONAL FLUX DIAGRAM

Report number:

MANUFACTURER:	Address:	
NAME: LCG1210-2	TYPE:	WEIGHT:
SPECIFICATION:	DIMENSION:	SERIAL No.:

γ	C0	C45	C90	C135	C180	C225	C270	C315	γ	Φ zone	Φ total
5.0	183.2	172.7	164.2	154.0	156.6	154.0	164.2	172.7	0- 5	4.104	4.104
10.0	155.9	149.7	145.7	121.7	117.2	121.6	145.7	149.7	5- 10	10.74	14.84
15.0	115.1	119.5	127.2	89.74	78.08	89.72	127.2	119.5	10- 15	14.40	29.25
20.0	77.31	88.76	108.7	62.85	51.96	62.85	108.7	88.76	15- 20	15.30	44.55
25.0	53.50	62.56	90.19	44.17	36.35	44.11	90.19	62.56	20- 25	14.58	59.13
30.0	38.14	44.63	71.68	32.40	26.36	32.27	71.67	44.63	25- 30	13.15	72.29
35.0	28.41	32.84	53.16	24.90	20.73	24.76	53.16	32.84	30- 35	11.41	83.71
40.0	22.27	24.83	34.64	20.10	17.15	20.10	34.64	24.83	35- 40	9.589	93.30
45.0	18.68	19.88	16.12	16.93	15.36	16.93	16.12	19.88	40- 45	7.770	101.0
50.0	16.89	16.49	15.75	15.20	14.33	15.25	15.75	16.49	45- 50	6.586	107.6
55.0	15.87	14.32	15.38	14.07	13.82	14.07	15.38	14.32	50- 55	6.533	114.1
60.0	15.10	13.96	15.01	13.91	13.56	13.91	15.01	14.13	55- 60	6.688	120.8
65.0	14.84	13.75	14.64	13.56	13.31	13.58	14.64	13.77	60- 65	6.852	127.7
70.0	14.33	13.57	14.27	13.41	13.05	13.41	14.27	13.57	65- 70	6.996	134.7
75.0	14.08	13.38	13.90	13.16	13.05	13.27	13.90	13.39	70- 75	7.093	141.8
80.0	14.08	13.11	13.53	13.10	12.80	13.11	13.53	13.19	75- 80	7.139	148.9
85.0	13.56	12.96	13.16	12.92	12.80	12.96	13.16	13.00	80- 85	7.129	156.0
90.0	13.56	12.80	12.80	12.80	12.80	12.80	12.80	12.80	85- 90	7.069	163.1
95.0	13.05	12.80	12.82	12.80	12.80	12.80	12.80	12.80	90- 95	7.017	170.1
100.0	13.05	12.86	12.85	12.80	12.54	12.80	12.80	12.80	95-100	6.970	177.1
105.0	13.05	12.80	12.88	12.90	12.80	12.80	12.80	12.80	100-105	6.870	184.0
110.0	13.05	12.95	12.91	12.80	12.80	12.80	12.80	12.80	105-110	6.717	190.7
115.0	13.05	12.99	12.94	12.82	12.80	12.80	12.80	12.80	110-115	6.508	197.2
120.0	13.05	12.96	12.97	12.96	12.80	12.80	12.80	12.80	115-120	6.255	203.4
125.0	13.31	13.05	12.99	13.05	12.80	12.80	12.80	12.80	120-125	5.955	209.4
130.0	13.05	13.06	13.02	12.90	12.80	12.80	12.80	12.80	125-130	5.605	215.0
135.0	13.05	13.11	13.05	12.96	12.80	12.77	12.80	12.80	130-135	5.215	220.2
140.0	13.05	13.13	13.14	13.04	12.80	12.88	12.85	12.80	135-140	4.789	225.0
145.0	13.05	13.16	13.22	13.25	12.80	12.51	12.91	12.80	140-145	4.329	229.3
150.0	13.31	13.09	13.31	13.18	12.67	12.92	12.97	12.80	145-150	3.836	233.2
155.0	13.31	13.26	13.39	13.41	13.05	12.95	13.02	12.89	150-155	3.315	236.5
160.0	13.31	13.40	13.48	13.32	13.05	13.14	13.08	12.97	155-160	2.762	239.3
165.0	13.56	13.44	13.56	13.60	13.05	13.18	13.14	12.99	160-165	2.189	241.4
170.0	13.56	13.48	13.65	13.70	13.31	13.23	13.19	13.22	165-170	1.587	243.0
175.0	13.82	13.75	13.73	13.76	13.31	13.27	13.25	13.27	170-175	0.964	244.0
180.0	13.82	13.82	13.82	13.82	13.31	13.31	13.31	13.31	175-180	0.324	244.3
DEG	LUMINOUS INTENSITY:cd								UNIT:lm		

Test System:HOPOO HPG1900  
Temperature:25.3DEG  
Operators:  
Test Date:2023年03月08日

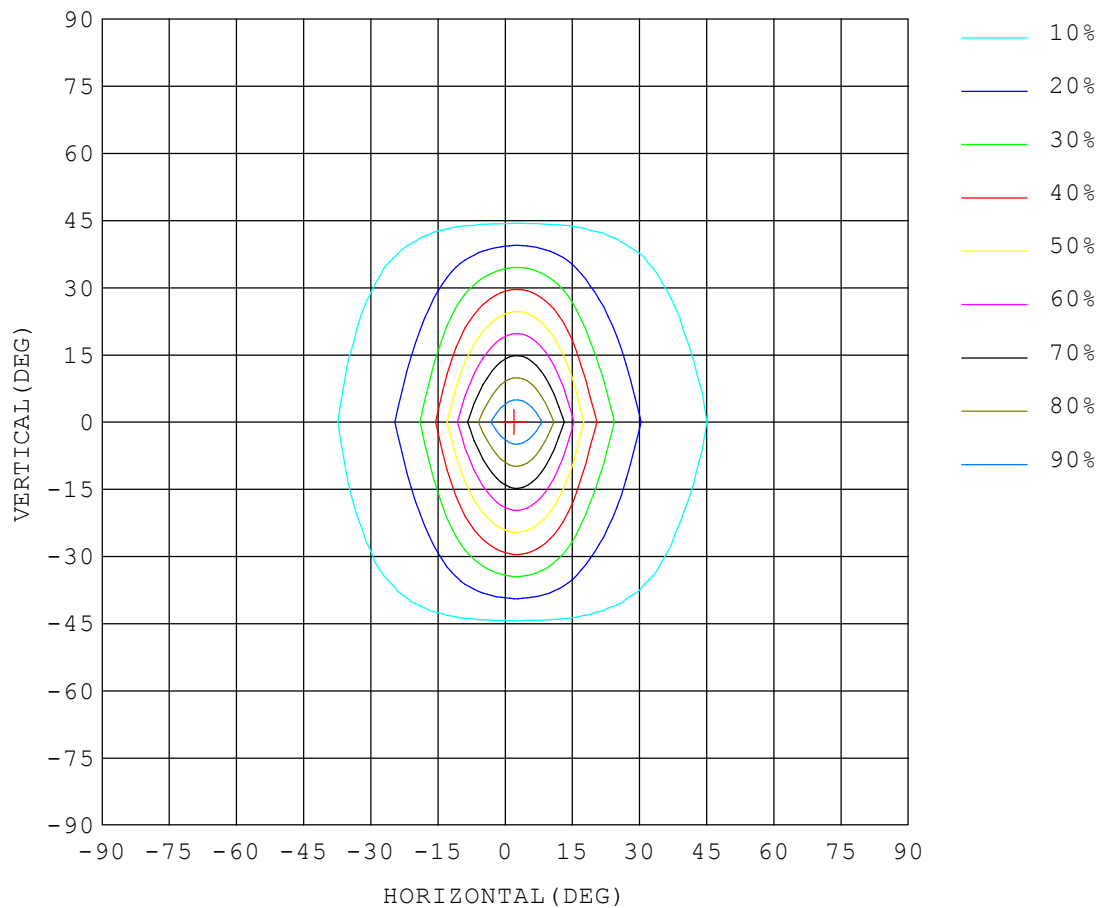
Test Set: 5.0deg/s B-Beta (TYPE B)  
Humidity:65.0%  
Test Distance:16.000 m  
Remarks:

## ISOCANDELA DIAGRAM

Report number:

MANUFACTURER:	Address:	
NAME: LCG1210-2	TYPE:	WEIGHT:
SPECIFICATION:	DIMENSION:	SERIAL No.:

UNIT: cd



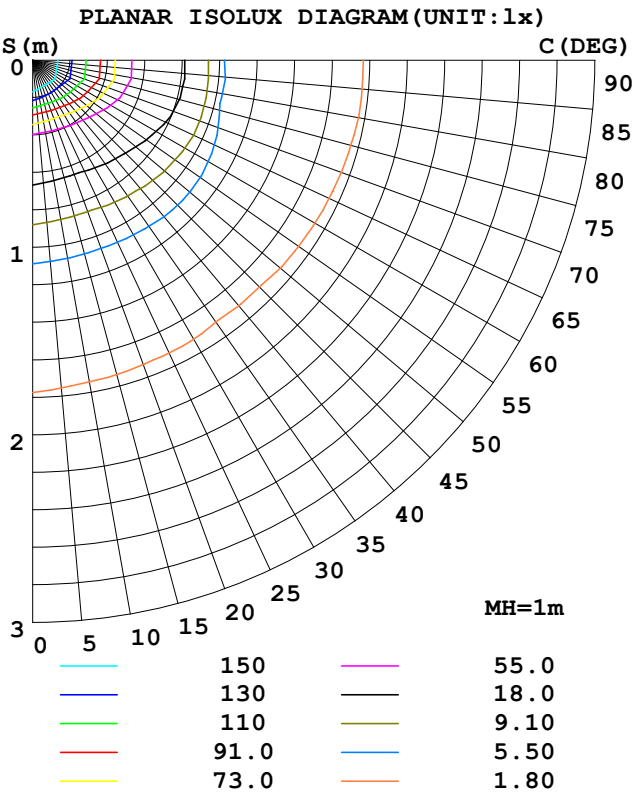
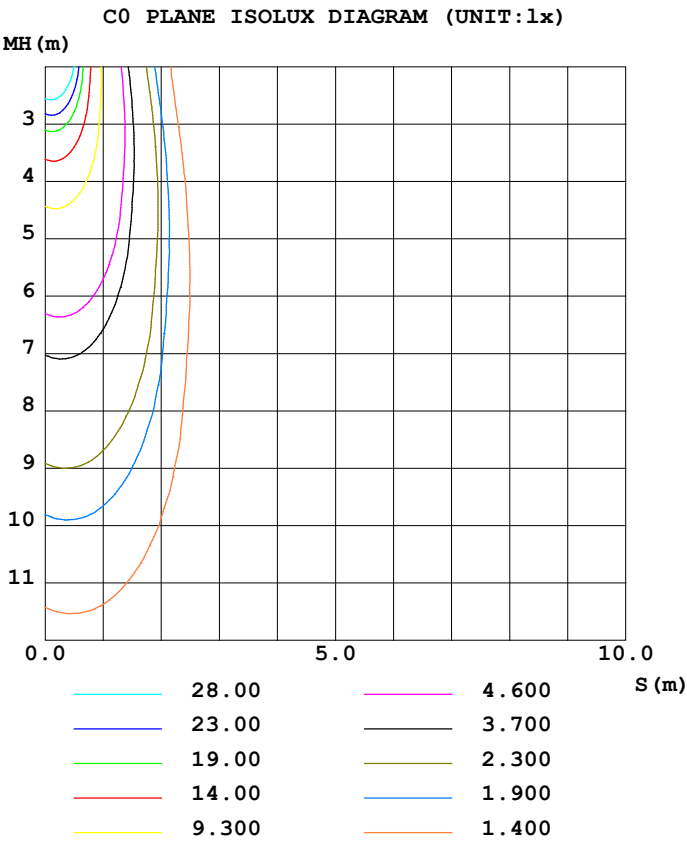
Test System:HOPOO HPG1900  
Temperature:25.3DEG  
Operators:  
Test Date:2023年03月08日

Test Set: 5.0deg/s B-Beta (TYPE B)  
Humidity:65.0%  
Test Distance:16.000 m  
Remarks:

ISOLUX DIAGRAM

Report number:

MANUFACTURER:	Address:	
NAME: LCG1210-2	TYPE:	WEIGHT:
SPECIFICATION:	DIMENSION:	SERIAL No.:



Test System:HOPOO HPG1900  
Temperature:25.3DEG  
Operators:  
Test Date:2023年03月08日

Test Set: 5.0deg/s B-Beta (TYPE B)  
Humidity:65.0%  
Test Distance:16.000 m  
Remarks:

# HONGPU GONIOPHOTOMETERS SYSTEM TEST REPORT

## LUMINOUS DISTRIBUTION INTENSITY DATA

Report number:

MANUFACTURER:	Address:		
NAME: LCG1210-2	TYPE:	WEIGHT:	
SPECIFICATION:	DIMENSION:	SERIAL No.:	

UNIT: cd

C (DEG) γ (DEG)	0	5	10	15	20	25	30	35	40	45	50	55	60	65	70
0.0	183	183	183	183	183	183	183	183	183	183	183	183	183	183	183
5.0	183	182	180	179	178	176	175	175	174	173	172	171	170	169	169
10.0	156	153	152	150	149	149	149	149	149	150	150	151	151	151	151
15.0	115	113	111	110	110	111	113	114	117	120	122	125	127	129	131
20.0	77.3	75.2	73.9	73.4	73.9	75.4	77.3	80.6	84.9	88.7	93.5	98.0	102	106	109
25.0	53.5	51.9	51.0	50.7	51.0	52.0	53.5	55.6	58.4	62.5	67.8	73.1	78.6	83.6	87.9
30.0	38.1	36.9	36.1	35.8	36.1	36.8	38.2	39.8	42.0	44.6	48.1	52.6	58.2	63.3	67.8
35.0	28.4	27.5	27.0	26.9	27.0	27.5	28.4	29.4	31.0	32.8	35.1	37.8	41.5	45.8	49.6
40.0	22.2	21.6	21.3	21.2	21.4	21.7	22.3	22.9	23.8	24.8	26.2	27.7	29.4	31.7	33.7
45.0	18.6	18.2	18.1	18.0	18.1	18.1	18.4	18.8	19.3	19.8	20.1	20.5	20.6	20.5	20.1
50.0	16.8	16.5	16.2	16.1	16.1	16.1	16.2	16.2	16.4	16.4	16.2	15.6	15.1	15.4	15.6
55.0	15.8	15.5	15.1	15.0	14.9	14.9	14.8	14.9	14.5	14.3	14.4	14.6	14.7	14.9	15.2
60.0	15.1	14.8	14.5	14.5	14.3	14.1	14.1	13.8	13.9	13.9	14.2	14.4	14.5	14.6	14.7
65.0	14.8	14.4	14.1	13.9	13.7	13.7	13.6	13.6	13.6	13.7	13.8	13.9	14.0	14.2	14.4
70.0	14.3	13.9	13.8	13.6	13.3	13.2	13.4	13.4	13.4	13.5	13.6	13.7	13.8	13.9	14.1
75.0	14.0	13.6	13.3	13.3	13.2	13.1	13.2	13.2	13.3	13.3	13.3	13.5	13.5	13.6	13.7
80.0	14.0	13.6	13.0	12.9	13.1	13.0	13.0	13.0	13.1	13.1	13.1	13.2	13.3	13.3	13.4
85.0	13.5	12.5	13.0	12.9	12.8	12.9	12.9	12.9	12.9	12.9	12.9	13.0	13.0	13.0	13.1
90.0	13.5	12.8	12.8	12.8	12.8	12.8	12.8	12.8	12.8	12.8	12.8	12.8	12.8	12.8	12.8
95.0	13.0	13.0	12.9	12.9	12.8	12.8	12.8	12.8	12.8	12.8	12.8	12.8	12.8	12.8	12.8
100.0	13.0	13.0	12.6	12.9	12.9	12.9	12.8	12.8	12.8	12.8	12.8	12.8	12.8	12.8	12.8
105.0	13.0	13.0	13.0	12.8	13.0	12.8	12.9	12.8	12.8	12.8	12.9	12.9	12.8	12.8	12.8
110.0	13.0	13.0	13.0	13.0	12.8	12.8	12.8	12.9	12.9	12.9	12.8	12.9	12.8	12.9	12.8
115.0	13.0	13.0	13.0	12.8	12.9	13.0	12.8	12.8	12.9	12.9	12.9	12.7	12.9	12.9	12.8
120.0	13.0	13.0	13.0	13.0	13.0	12.8	12.9	12.8	13.0	12.9	13.0	13.0	12.8	12.8	12.9
125.0	13.3	13.1	12.9	12.9	13.0	12.8	12.9	13.0	13.0	13.0	12.9	12.8	12.9	12.9	12.8
130.0	13.0	13.0	13.0	12.9	13.1	13.0	13.0	13.0	13.0	13.0	13.0	12.8	13.0	13.0	12.9
135.0	13.0	13.0	13.0	12.9	13.0	13.0	13.0	13.0	13.0	13.1	13.0	13.0	12.9	12.9	13.0
140.0	13.0	13.0	13.0	13.0	12.9	13.0	13.1	13.0	13.1	13.1	13.0	13.0	13.0	12.9	13.1
145.0	13.0	13.0	13.1	13.1	13.1	13.0	13.2	13.0	13.0	13.1	13.0	13.1	13.1	13.1	13.1
150.0	13.3	13.2	13.2	13.2	13.1	13.2	13.1	13.1	13.1	13.0	13.1	13.2	13.2	13.2	13.2
155.0	13.3	13.2	13.2	13.2	13.2	13.2	13.1	13.2	13.2	13.2	13.2	13.3	13.3	13.3	13.2
160.0	13.3	13.3	13.2	13.2	13.2	13.2	13.3	13.3	13.4	13.4	13.3	13.3	13.3	13.3	13.3
165.0	13.5	13.5	13.5	13.5	13.5	13.4	13.4	13.4	13.4	13.4	13.4	13.3	13.4	13.4	13.5
170.0	13.5	13.5	13.5	13.5	13.5	13.4	13.4	13.4	13.4	13.4	13.5	13.6	13.6	13.6	13.6
175.0	13.8	13.8	13.8	13.8	13.7	13.7	13.7	13.7	13.7	13.7	13.7	13.7	13.7	13.7	13.7
180.0	13.8	13.8	13.8	13.8	13.8	13.8	13.8	13.8	13.8	13.8	13.8	13.8	13.8	13.8	13.8

Test System:HOPOO HPG1900  
Temperature:25.3DEG  
Operators:  
Test Date:2023年03月08日

Test Set: 5.0deg/s B-Beta (TYPE B)  
Humidity:65.0%  
Test Distance:16.000 m  
Remarks:

# HONGPU GONIOPHOTOMETERS SYSTEM TEST REPORT

## LUMINOUS DISTRIBUTION INTENSITY DATA

Report number:

MANUFACTURER:	Address:		
NAME: LCG1210-2	TYPE:	WEIGHT:	
SPECIFICATION:	DIMENSION:	SERIAL No.:	

UNIT: cd

C (DEG) γ (DEG)	75	80	85	90	95	100	105	110	115	120	125	130	135	140	145
0.0	183	183	183	183	183	183	183	183	183	183	183	183	183	183	183
5.0	168	167	165	164	163	162	161	159	158	157	156	155	154	153	153
10.0	150	149	148	146	144	141	138	135	132	130	127	124	122	119	117
15.0	131	131	129	127	124	120	116	112	107	103	98.3	93.9	89.7	85.9	82.6
20.0	111	112	111	109	105	101	95.8	90.2	84.4	78.6	73.0	67.7	62.8	58.9	55.8
25.0	90.9	92.4	92.3	90.1	86.7	81.8	76.4	70.6	64.4	58.3	52.6	48.0	44.1	41.2	39.0
30.0	71.2	73.2	73.4	71.6	68.4	64.1	59.0	53.5	47.8	42.5	38.3	34.9	32.4	30.2	28.8
35.0	52.5	54.2	54.6	53.1	50.6	47.3	43.4	39.1	34.8	31.4	28.6	26.5	24.9	23.5	22.4
40.0	35.1	35.6	35.6	34.6	33.3	31.7	29.8	27.5	25.3	23.5	22.1	21.0	20.1	19.2	18.4
45.0	18.9	17.6	16.6	16.1	16.4	17.0	17.8	18.1	18.3	18.2	17.9	17.4	16.9	16.6	16.1
50.0	15.6	15.7	15.8	15.7	15.7	15.5	15.3	15.1	14.9	14.8	14.8	15.2	15.2	15.0	14.7
55.0	15.4	15.4	15.3	15.3	15.3	15.2	15.0	14.8	14.7	14.5	14.4	14.0	14.0	14.0	14.0
60.0	14.9	15.0	15.0	15.0	15.0	14.8	14.7	14.5	14.3	14.1	14.0	14.0	13.9	13.7	13.5
65.0	14.5	14.6	14.6	14.6	14.6	14.5	14.3	14.1	14.0	13.9	13.7	13.6	13.5	13.6	13.4
70.0	14.2	14.3	14.2	14.2	14.2	14.1	13.9	13.8	13.7	13.7	13.5	13.5	13.4	13.3	13.3
75.0	13.8	13.9	13.9	13.9	13.9	13.8	13.6	13.6	13.5	13.4	13.4	13.3	13.1	13.1	13.2
80.0	13.5	13.5	13.5	13.5	13.5	13.4	13.3	13.3	13.2	13.2	13.1	13.0	13.1	13.0	13.0
85.0	13.1	13.1	13.1	13.1	13.1	13.1	13.0	13.0	13.0	13.0	12.9	12.9	12.9	12.9	12.9
90.0	12.8	12.8	12.8	12.8	12.8	12.8	12.8	12.8	12.8	12.8	12.8	12.8	12.8	12.8	12.8
95.0	12.8	12.8	12.8	12.8	12.8	12.8	12.8	12.8	12.8	12.8	12.8	12.8	12.8	12.8	12.8
100.0	12.8	12.8	12.8	12.8	12.8	12.8	12.8	12.8	12.8	12.8	12.8	12.8	12.8	12.8	12.8
105.0	12.8	12.8	12.8	12.8	12.8	12.8	12.8	12.8	12.8	12.8	12.8	12.9	12.9	12.8	12.8
110.0	12.9	12.8	12.8	12.9	12.9	12.9	12.8	12.8	12.8	12.8	12.8	12.8	12.8	12.8	12.8
115.0	12.9	12.8	12.8	12.9	12.9	12.9	12.8	12.8	12.8	12.8	12.9	12.9	12.8	12.8	13.0
120.0	12.9	12.8	12.8	12.9	12.9	12.9	12.9	12.9	12.8	12.8	12.8	12.8	12.9	12.8	12.8
125.0	13.0	12.9	12.8	12.9	12.9	13.0	13.0	12.8	12.8	13.0	12.8	13.0	13.0	13.0	12.8
130.0	13.0	13.0	12.8	13.0	13.0	13.0	12.9	12.9	12.8	12.8	12.8	12.9	12.9	13.1	13.1
135.0	13.0	13.0	12.9	13.0	13.0	13.0	12.9	12.8	13.0	12.8	13.1	12.9	12.9	12.9	13.1
140.0	13.0	13.0	13.0	13.1	13.1	13.1	13.1	13.1	12.9	12.9	12.9	13.1	13.0	13.1	13.1
145.0	13.0	13.0	13.2	13.2	13.2	13.2	13.2	13.1	13.0	13.2	13.0	13.0	13.2	13.1	13.0
150.0	13.2	13.3	13.3	13.3	13.3	13.3	13.3	13.3	13.3	13.2	13.3	13.1	13.1	13.2	13.3
155.0	13.2	13.2	13.3	13.3	13.3	13.4	13.4	13.4	13.3	13.4	13.2	13.2	13.4	13.2	13.3
160.0	13.4	13.4	13.4	13.4	13.4	13.4	13.4	13.5	13.5	13.5	13.4	13.5	13.3	13.5	13.4
165.0	13.5	13.5	13.5	13.5	13.5	13.5	13.5	13.5	13.5	13.6	13.6	13.6	13.6	13.6	13.6
170.0	13.6	13.6	13.6	13.6	13.6	13.6	13.6	13.6	13.6	13.6	13.6	13.6	13.7	13.7	13.7
175.0	13.7	13.7	13.7	13.7	13.7	13.7	13.7	13.7	13.7	13.7	13.7	13.7	13.7	13.7	13.7
180.0	13.8	13.8	13.8	13.8	13.8	13.8	13.8	13.8	13.8	13.8	13.8	13.8	13.8	13.8	13.8

Test System:HOPOO HPG1900  
 Temperature:25.3DEG  
 Operators:  
 Test Date:2023年03月08日

Test Set: 5.0deg/s B-Beta (TYPE B)  
 Humidity:65.0%  
 Test Distance:16.000 m  
 Remarks:

# HONGPU GONIOPHOTOMETERS SYSTEM TEST REPORT

## LUMINOUS DISTRIBUTION INTENSITY DATA

Report number:

MANUFACTURER:	Address:		
NAME: LCG1210-2	TYPE:	WEIGHT:	
SPECIFICATION:	DIMENSION:	SERIAL No.:	

UNIT: cd

C (DEG) γ (DEG)	150	155	160	165	170	175	180	185	190	195	200	205	210	215	220
0.0	183	183	183	183	183	183	183	183	183	183	183	183	183	183	183
5.0	153	153	153	154	154	155	157	155	154	154	153	153	153	153	153
10.0	116	115	115	114	115	116	117	116	115	114	114	115	116	117	119
15.0	80.3	78.1	76.6	75.9	75.9	76.6	78.0	76.6	75.9	75.9	76.6	78.1	80.2	82.6	85.9
20.0	53.3	51.7	50.6	50.1	50.1	50.7	51.9	50.7	50.1	50.1	50.6	51.7	53.3	55.8	58.9
25.0	37.3	36.0	35.2	35.0	35.0	35.4	36.3	35.4	35.0	34.9	35.2	36.0	37.3	38.9	41.2
30.0	27.5	26.7	26.1	25.7	25.6	25.8	26.3	25.8	25.6	25.7	26.0	26.7	27.5	28.7	30.2
35.0	21.4	20.8	20.3	20.1	20.1	20.3	20.7	20.3	20.1	20.1	20.4	20.8	21.4	22.3	23.5
40.0	17.9	17.4	17.1	16.8	16.8	16.9	17.1	16.9	16.8	16.9	17.1	17.4	17.8	18.5	19.1
45.0	15.8	15.4	15.2	15.1	15.1	15.2	15.3	15.2	15.1	15.1	15.2	15.5	15.8	16.1	16.6
50.0	14.6	14.5	14.3	14.3	14.3	14.2	14.3	14.2	14.3	14.4	14.4	14.5	14.6	14.9	15.0
55.0	13.9	13.9	13.8	13.8	13.9	13.8	13.8	13.8	13.9	13.8	13.8	14.1	14.1	14.1	14.2
60.0	13.6	13.6	13.6	13.5	13.4	13.5	13.5	13.5	13.4	13.5	13.6	13.6	13.7	13.8	13.7
65.0	13.5	13.3	13.3	13.4	12.7	13.2	13.3	13.3	12.7	13.4	13.3	13.3	13.5	13.6	13.6
70.0	13.3	13.2	13.3	13.1	13.1	13.1	13.0	13.1	13.2	13.3	13.3	13.2	13.3	13.3	13.4
75.0	13.1	13.1	13.0	13.0	13.1	13.0	13.0	13.0	13.1	13.0	13.2	13.1	13.1	13.2	13.3
80.0	13.0	13.0	12.9	12.9	13.0	12.9	12.8	13.0	13.0	12.9	12.9	13.0	13.0	13.0	13.0
85.0	12.9	12.8	12.8	12.9	12.8	12.8	12.8	13.0	12.9	12.9	12.8	12.9	12.9	12.9	12.9
90.0	12.8	12.8	12.8	12.8	12.8	12.8	12.8	12.8	12.8	12.8	12.8	12.8	12.8	12.8	12.8
95.0	12.8	12.8	12.8	12.8	12.8	12.8	12.8	12.8	12.8	12.8	12.8	12.8	12.8	12.8	12.8
100.0	12.8	12.8	12.8	12.9	12.8	13.0	12.5	12.7	12.8	12.8	12.8	12.8	12.8	12.8	12.8
105.0	12.8	12.8	12.8	12.8	13.1	13.1	12.8	12.8	12.7	12.8	12.8	12.8	12.8	12.8	12.8
110.0	12.8	12.8	12.8	12.9	13.0	13.1	12.8	12.8	12.7	12.8	12.7	12.8	12.8	12.8	12.8
115.0	12.8	13.0	12.8	12.9	13.0	13.1	12.8	12.7	12.6	12.8	12.7	12.8	12.8	12.8	12.8
120.0	12.9	12.9	13.0	13.0	13.1	13.2	12.8	12.7	12.7	12.8	12.7	12.8	12.8	12.8	12.8
125.0	12.9	13.1	13.0	13.0	13.1	13.2	12.8	12.7	12.6	12.8	12.8	12.8	12.8	12.7	12.8
130.0	12.9	13.0	13.0	13.1	13.1	13.2	12.8	12.8	12.8	12.8	12.8	12.7	12.8	12.8	12.8
135.0	13.1	13.0	13.0	13.2	13.1	13.2	12.8	12.8	12.8	12.6	12.8	12.8	12.8	12.8	12.8
140.0	13.1	13.2	13.1	13.2	13.2	13.2	12.8	12.8	12.8	12.8	12.8	12.8	12.3	12.8	12.7
145.0	13.2	13.2	13.1	13.3	13.4	13.5	12.8	12.6	12.2	12.2	12.8	12.8	12.7	12.9	12.9
150.0	13.3	13.3	13.1	13.2	13.3	13.4	12.6	12.6	12.6	12.6	12.9	12.9	12.9	12.4	12.9
155.0	13.3	13.3	13.4	13.4	13.5	13.5	13.0	12.9	12.6	12.2	12.6	12.9	12.9	12.9	12.9
160.0	13.5	13.4	13.4	13.4	13.5	13.5	13.0	13.0	13.0	13.0	13.0	13.0	12.9	13.1	13.0
165.0	13.6	13.5	13.4	13.6	13.7	13.7	13.0	13.0	13.0	13.1	13.2	13.2	13.2	13.0	13.1
170.0	13.7	13.7	13.7	13.7	13.7	13.8	13.3	13.3	13.2	13.2	13.2	13.2	13.2	13.2	13.2
175.0	13.7	13.7	13.7	13.8	13.8	13.8	13.3	13.3	13.3	13.2	13.2	13.2	13.2	13.2	13.2
180.0	13.8	13.8	13.8	13.8	13.8	13.8	13.3	13.3	13.3	13.3	13.3	13.3	13.3	13.3	13.3

Test System:HOPOO HPG1900  
Temperature:25.3DEG  
Operators:  
Test Date:2023年03月08日

Test Set: 5.0deg/s B-Beta (TYPE B)  
Humidity:65.0%  
Test Distance:16.000 m  
Remarks:



# HONGPU GONIOPHOTOMETERS SYSTEM TEST REPORT

## LUMINOUS DISTRIBUTION INTENSITY DATA

Report number:

MANUFACTURER:	Address:		
NAME: LCG1210-2	TYPE:	WEIGHT:	
SPECIFICATION:	DIMENSION:	SERIAL No.:	

UNIT: cd

C (DEG) γ (DEG)	225	230	235	240	245	250	255	260	265	270	275	280	285	290	295
0.0	183	183	183	183	183	183	183	183	183	183	183	183	183	183	183
5.0	154	155	156	157	158	159	161	162	163	164	165	166	167	168	169
10.0	122	124	126	130	132	135	138	141	144	146	148	149	150	151	151
15.0	89.7	93.8	98.2	103	107	112	116	120	124	127	129	131	131	131	129
20.0	62.8	67.7	73.0	78.5	84.3	90.1	95.7	101	105	109	111	112	111	109	106
25.0	44.1	48.0	52.6	58.2	64.3	70.4	76.2	81.6	86.4	90.1	92.2	92.4	90.9	87.7	83.5
30.0	32.2	34.9	38.2	42.5	47.8	53.4	58.7	64.0	68.2	71.6	73.3	73.2	71.1	67.6	63.2
35.0	24.7	26.4	28.5	31.2	34.8	39.1	43.3	47.1	50.4	53.1	54.4	54.2	52.3	49.5	45.8
40.0	20.1	20.9	22.1	23.5	25.3	27.4	29.6	31.4	33.1	34.6	35.4	35.6	34.8	33.6	31.5
45.0	16.9	17.4	17.6	17.9	18.1	18.1	17.7	16.6	16.2	16.1	16.5	17.6	18.8	20.1	20.5
50.0	15.2	15.0	14.8	14.8	14.9	15.1	15.3	15.2	15.5	15.7	15.7	15.6	15.5	15.4	15.2
55.0	14.0	14.2	14.1	14.3	14.5	14.8	14.9	15.0	15.1	15.3	15.3	15.2	15.2	15.0	14.9
60.0	13.9	13.8	14.0	14.1	14.2	14.4	14.5	14.7	14.8	15.0	15.0	14.8	14.9	14.7	14.6
65.0	13.5	13.6	13.8	13.9	14.0	14.1	14.2	14.3	14.5	14.6	14.6	14.5	14.5	14.4	14.2
70.0	13.4	13.5	13.6	13.5	13.7	13.8	13.9	14.0	14.1	14.2	14.2	14.1	14.2	14.0	13.9
75.0	13.2	13.3	13.3	13.3	13.4	13.5	13.6	13.7	13.8	13.9	13.9	13.8	13.8	13.7	13.6
80.0	13.1	13.1	13.1	13.1	13.2	13.3	13.3	13.4	13.4	13.5	13.5	13.4	13.4	13.4	13.3
85.0	12.9	12.9	12.9	12.9	13.0	13.0	13.0	13.1	13.1	13.1	13.1	13.1	13.1	13.1	13.0
90.0	12.8	12.8	12.8	12.8	12.8	12.8	12.8	12.8	12.8	12.8	12.8	12.8	12.8	12.8	12.8
95.0	12.8	12.8	12.8	12.8	12.8	12.8	12.8	12.8	12.8	12.8	12.8	12.8	12.8	12.8	12.8
100.0	12.8	12.8	12.8	12.8	12.8	12.8	12.8	12.8	12.8	12.8	12.8	12.8	12.8	12.8	12.8
105.0	12.8	12.8	12.8	12.8	12.8	12.8	12.8	12.8	12.8	12.8	12.8	12.8	12.8	12.8	12.8
110.0	12.8	12.8	12.8	12.8	12.8	12.8	12.8	12.8	12.8	12.8	12.8	12.8	12.8	12.8	12.8
115.0	12.8	12.8	12.8	12.8	12.8	12.8	12.8	12.8	12.8	12.8	12.8	12.8	12.8	12.8	12.8
120.0	12.8	12.8	12.8	12.8	12.8	12.8	12.8	12.8	12.8	12.8	12.8	12.8	12.8	12.8	12.8
125.0	12.8	12.8	12.8	12.8	12.8	12.8	12.8	12.8	12.8	12.8	12.8	12.8	12.8	12.8	12.8
130.0	12.8	12.7	12.8	12.8	12.8	12.8	12.8	12.8	12.8	12.8	12.8	12.8	12.8	12.8	12.8
135.0	12.7	12.8	12.7	12.8	12.8	12.8	12.8	12.8	12.8	12.8	12.8	12.8	12.8	12.8	12.8
140.0	12.8	12.7	12.8	12.8	12.8	12.8	12.8	12.8	12.8	12.8	12.8	12.8	12.8	12.8	12.8
145.0	12.5	12.8	12.8	12.9	12.9	12.9	12.9	12.9	12.9	12.9	12.9	12.9	12.8	12.9	12.8
150.0	12.9	12.9	12.9	12.9	12.9	12.9	12.9	12.9	12.9	12.9	12.9	12.9	12.9	12.8	13.0
155.0	12.9	13.0	13.0	12.9	13.0	13.0	13.0	13.0	13.0	13.0	13.0	13.0	13.0	12.9	12.9
160.0	13.1	13.0	13.0	13.1	13.1	13.0	13.0	13.0	13.0	13.0	13.0	13.0	13.0	13.0	13.0
165.0	13.1	13.1	13.1	13.1	13.1	13.1	13.1	13.1	13.1	13.1	13.1	13.1	13.1	13.1	13.1
170.0	13.2	13.2	13.2	13.2	13.2	13.2	13.2	13.1	13.1	13.1	13.1	13.1	13.2	13.2	13.2
175.0	13.2	13.2	13.2	13.2	13.2	13.2	13.2	13.2	13.2	13.2	13.2	13.2	13.2	13.2	13.2
180.0	13.3	13.3	13.3	13.3	13.3	13.3	13.3	13.3	13.3	13.3	13.3	13.3	13.3	13.3	13.3

Test System:HOPOO HPG1900  
Temperature:25.3DEG  
Operators:  
Test Date:2023年03月08日

Test Set: 5.0deg/s B-Beta (TYPE B)  
Humidity:65.0%  
Test Distance:16.000 m  
Remarks:

# HONGPU GONIOPHOTOMETERS SYSTEM TEST REPORT

## LUMINOUS DISTRIBUTION INTENSITY DATA

Report number:

MANUFACTURER:	Address:		
NAME: LCG1210-2	TYPE:	WEIGHT:	
SPECIFICATION:	DIMENSION:	SERIAL No.:	

UNIT: cd

C (DEG) γ (DEG)	300	305	310	315	320	325	330	335	340	345	350	355
0.0	183	183	183	183	183	183	183	183	183	183	183	183
5.0	170	171	172	173	174	175	175	176	178	179	180	182
10.0	151	151	150	150	149	149	149	149	149	150	152	153
15.0	127	125	122	120	117	114	113	111	110	110	111	113
20.0	102	97.9	93.5	88.7	84.8	80.5	77.3	75.4	73.8	73.4	73.9	75.2
25.0	78.5	73.1	67.7	62.5	58.4	55.6	53.5	52.0	51.0	50.7	51.0	51.9
30.0	58.1	52.6	48.0	44.6	42.0	39.8	38.1	36.8	36.1	35.8	36.1	36.9
35.0	41.4	37.7	35.1	32.8	30.9	29.4	28.4	27.6	27.0	26.9	27.0	27.5
40.0	29.2	27.7	26.2	24.8	23.8	22.9	22.3	21.7	21.4	21.3	21.4	21.6
45.0	20.6	20.5	20.1	19.8	19.3	18.8	18.5	18.1	18.1	18.0	18.1	18.3
50.0	15.1	15.3	16.2	16.4	16.4	16.4	16.2	16.2	16.1	16.1	16.2	16.5
55.0	14.7	14.6	14.5	14.3	14.8	14.9	15.0	14.9	15.0	15.1	15.2	15.5
60.0	14.3	14.4	14.2	14.1	13.9	14.0	14.1	14.3	14.3	14.5	14.6	14.8
65.0	14.0	14.0	13.8	13.7	13.8	13.7	13.7	13.7	13.9	14.1	14.2	14.5
70.0	13.8	13.7	13.6	13.5	13.4	13.5	13.4	13.4	13.6	13.7	13.8	14.0
75.0	13.5	13.5	13.4	13.3	13.3	13.3	13.2	13.3	13.4	13.3	13.5	13.7
80.0	13.3	13.2	13.2	13.1	13.1	13.1	13.1	13.1	13.1	13.1	13.3	13.6
85.0	13.0	13.0	12.9	13.0	12.9	12.9	12.9	12.9	12.9	13.0	13.1	13.0
90.0	12.8	12.8	12.8	12.8	12.8	12.8	12.8	12.8	12.8	12.8	12.8	12.8
95.0	12.8	12.8	12.8	12.8	12.8	12.8	12.8	12.8	12.8	12.8	12.8	12.8
100.0	12.8	12.8	12.8	12.8	12.8	12.8	12.8	12.8	12.8	12.8	12.7	12.7
105.0	12.8	12.8	12.8	12.8	12.8	12.8	12.8	12.8	12.8	12.7	12.7	12.7
110.0	12.8	12.8	12.8	12.8	12.8	12.8	12.8	12.8	12.8	12.7	12.7	12.6
115.0	12.8	12.8	12.8	12.8	12.8	12.8	12.8	12.7	12.7	12.8	12.8	12.8
120.0	12.8	12.8	12.8	12.8	12.8	12.8	12.7	12.8	12.8	12.7	12.7	12.7
125.0	12.8	12.8	12.8	12.8	12.8	12.8	12.8	12.7	12.8	12.8	12.8	12.8
130.0	12.8	12.8	12.8	12.8	12.8	12.8	12.8	12.6	12.8	12.6	12.6	12.7
135.0	12.8	12.8	12.8	12.8	12.8	12.8	12.8	12.6	12.8	12.7	12.6	12.7
140.0	12.8	12.8	12.8	12.8	12.8	12.8	12.8	12.8	12.8	12.8	12.7	12.6
145.0	12.8	12.8	12.8	12.8	12.8	12.8	12.8	12.8	12.8	12.8	12.8	12.8
150.0	12.9	12.9	12.8	12.8	12.8	12.8	12.8	12.8	12.8	12.8	12.8	12.8
155.0	13.1	12.9	12.9	12.8	12.8	12.8	12.8	12.8	12.8	12.8	12.8	12.8
160.0	12.9	13.0	13.0	12.9	12.9	12.9	12.9	12.8	12.8	12.8	12.8	12.8
165.0	13.1	13.0	12.9	12.9	13.1	13.3	13.0	13.0	13.0	13.0	13.0	13.0
170.0	13.2	13.2	13.2	13.2	13.1	13.1	13.0	13.0	13.0	13.0	13.0	13.0
175.0	13.2	13.2	13.2	13.2	13.2	13.2	13.2	13.2	13.2	13.2	13.3	13.3
180.0	13.3	13.3	13.3	13.3	13.3	13.3	13.3	13.3	13.3	13.3	13.3	13.3

Test System:HOPOO HPG1900  
Temperature:25.3DEG  
Operators:  
Test Date:2023年03月08日

Test Set: 5.0deg/s B-Beta (TYPE B)  
Humidity:65.0%  
Test Distance:16.000 m  
Remarks: